

**RPS19 Antibody**  
**Rabbit mAb**  
**Catalog # AP91693****Specification**

---

**RPS19 Antibody - Product Information**

|   |                        |
|---|------------------------|
| Application                                   | WB, IHC, IP            |
| Primary Accession                             | <a href="#">P39019</a> |
| Reactivity                                    | Rat                    |
| Clonality                                     | Monoclonal             |
| <b>Other Names</b>                            |                        |
| DBA; DBA1; Ribosomal protein S19; rps19; S19; |                        |
| Isotype                                       | Rabbit IgG             |
| Host  | Rabbit                 |
| Calculated MW                                 | 16060 Da               |

**RPS19 Antibody - Additional Information**

|                              |   |
|------------------------------|---|
| Dilution                     | WB~~1:1000<br>IHC~~1:100~500<br>IP~~N/A   |
| Purification                 | Affinity-chromatography   |
| Immunogen                    | A synthesized peptide derived from human RPS19  |
| Description                  | Required for pre-rRNA processing and maturation of 40S ribosomal subunits.  |
| Storage Condition and Buffer | Rabbit IgG in phosphate buffered saline , pH 7.4, 150mM NaCl, 0.02% sodium azide and 50% glycerol. Store at +4°C short term. Store at -20°C long term. Avoid freeze / thaw cycle. |

**RPS19 Antibody - Protein Information****Name** RPS19 ([HGNC:10402](#))**Function**

Component of the small ribosomal subunit (PubMed:<a href="http://www.uniprot.org/citations/23636399" target="\_blank">23636399</a>). The ribosome is a large ribonucleoprotein complex responsible for the synthesis of proteins in the cell (PubMed:<a href="http://www.uniprot.org/citations/23636399" target="\_blank">23636399</a>). Required for pre- rRNA processing and maturation of 40S ribosomal subunits (PubMed:<a href="http://www.uniprot.org/citations/16990592" target="\_blank">16990592</a>). Part of the small subunit (SSU) processome, first precursor of the small eukaryotic ribosomal subunit. During the assembly of the SSU processome in the nucleolus, many ribosome biogenesis factors, an RNA chaperone and ribosomal proteins associate with the nascent pre-rRNA and work in concert to generate RNA folding, modifications, rearrangements and cleavage as well as targeted degradation of pre-ribosomal RNA by the RNA exosome (PubMed:<a href="http://www.uniprot.org/citations/16990592" target="\_blank">16990592</a>).

href="http://www.uniprot.org/citations/34516797" target="\_blank">34516797</a>).

**Cellular Location**

Cytoplasm. Nucleus, nucleolus

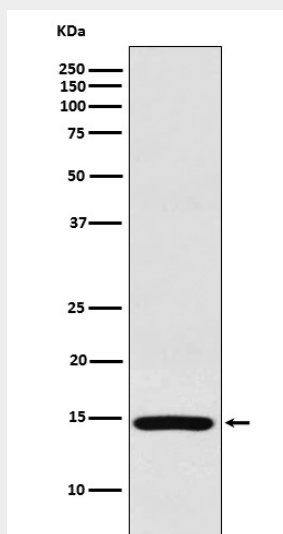
**Tissue Location**

Higher level expression is seen in the colon carcinoma tissue than normal colon tissue

**RPS19 Antibody - Protocols**

Provided below are standard protocols that you may find useful for product applications.

- [Western Blot](#)
- [Blocking Peptides](#)
- [Dot Blot](#)
- [Immunohistochemistry](#)
- [Immunofluorescence](#)
- [Immunoprecipitation](#)
- [Flow Cytometry](#)
- [Cell Culture](#)

**RPS19 Antibody - Images**

Western blot analysis of RPS19 expression in HeLa cell lysate.